



BORDEN

A NEW MUSICAL

A WORKSHOP PRESENTATION

BORDEN x merch. A NEW MUSICAL

COLLECTION



AND SO MUCH MORE!

**BECOME PART OF
"THE BORDEN FAM"**

FOR ACCESS TO OUR MERCH VISIT
WWW.BORDENMUSICAL.COM

A NOTE FROM THE ARTISTIC DIRECTOR

When Cavan Hendron, creator of *Borden: The Musical*, approached me about finding a way to workshop their new musical in development, I wanted to do whatever I could to make it happen. My initial drive came from a deep personal and professional appreciation for Cavan as both a visionary artist and a wonderful human being. However, after witnessing the raw emotional power of the story and the incredible score at an earlier presentation, my motivation evolved. I knew immediately that this experience was the perfect fit for Voices HEArD: A Women's Theatre Festival and our core theme of "Reclamation".



This piece is a perfect match for that theme because it brilliantly reframes the infamous 1892 case through the eyes of Lizzie's older sister, Emma Borden. Rather than retelling a sensationalized true-crime mystery, it explores complex sisterhood, the weight of societal expectations, and the heavy price of family loyalty. It actively reclaims Emma's narrative, giving a voice to a woman so often pushed to the footnotes of history.

Furthermore, with so many members of the *Borden* team being Kentucky natives who are currently living and working in New York, bringing them back felt like a vital full-circle moment. I knew this collision of local roots and professional New York theater development would make for a perfect, deeply meaningful collaboration.

I am profoundly grateful for the honor of hosting the *Borden* team as they continue to develop this beautiful, haunting work. I am also incredibly thankful to the Kentucky Foundation for Women and Sue Fossen for providing the funding and support to make this workshop possible. I cannot wait to see how this incredible piece continues to grow, and I am so excited for our community to hear more of Emma and Lizzie's story.

Vanessa Becker Weig

Executive Artistic Director - Voices Amplified





Simon & Schuster

THE TRIAL OF LIZZIE BORDEN

"ENTHRALLING...[ROBERTSON] REOPENS THE CASE AND PRESENTS THE EVIDENCE AFRESH, ALL THOSE ALLURING DETAILS OUT OF AN AGATHA CHRISTIE NOVEL"

- PARUL SEHGAL, THE NEW YORK TIMES

AVAILABLE ON
amazon **BARNES & NOBLE**
BOOKSELLERS
& WHEREVER YOU GET BOOKS!



The Trial of Lizzie Borden tells the true story of one of the most sensational murder trials in American history. When Andrew and Abby Borden were brutally hacked to death in Fall River, Massachusetts, in August 1892, the arrest of the couple's younger daughter Lizzie turned the case into international news and her trial into a spectacle unparalleled in American history. Reporters flocked to the scene. Well-known columnists took up conspicuous seats in the courtroom. The defendant was relentlessly scrutinized for signs of guilt or innocence. Everyone—rich and poor, suffragists and social conservatives, legal scholars and laypeople—had an opinion about Lizzie Borden's guilt or innocence. Was she a cold-blooded murderess or an unjustly persecuted lady? Did she or didn't she?

The popular fascination with the Borden murders and its central enigmatic character has endured for more than one hundred years.

Immortalized in rhyme, told and retold in every conceivable genre, the murders have secured a place in the American pantheon of mythic horror, but one typically wrenched from its historical moment. In contrast, Cara Robertson explores the stories Lizzie Borden's culture wanted and expected to hear and how those stories influenced the debate inside and outside of the courtroom. Based on transcripts of the Borden legal proceedings, contemporary newspaper accounts, unpublished local accounts, and recently unearthed letters from Lizzie herself, *The Trial of Lizzie Borden* offers a window onto America in the Gilded Age, showcasing its most deeply held convictions and its most troubling social anxieties.

PAM MILLER DOWNTOWN ARTS CENTER

AUDREY BELLE ADAMS CAVAN HENDRON VANESSA BECKER WEIG

VOICES AMPLIFIED

PRESENTS

BORDEN
A NEW MUSICAL

A WORKSHOP PRESENTATION

JUNE 11-13, 2026

PAM MILLER DOWNTOWN ARTS CENTER

BOOK CAVAN HENDRON AARON ROITMAN
MUSIC MATTHEW NASSIDA
LYRICS CAVAN HENDRON MATTHEW NASSIDA

DRAMATURG & HISTORICAL CONSULTING CARA ROBERTSON
PRODUCER AUDREY BELLE ADAMS

FEATURING

REILLY RICHARDSON, MCKINLEY HARPER, ELIZA MULLINS
PATRICK LEE LUCAS, LAURA MANCUSO
ZACKERY MORRIS, HANNAH BROWNING

EXECUTIVE ARTISTIC DIRECTOR VANESSA BECKER WEIG
ASSOCIATE FESTIVAL PRODUCER RYLIE SUDDUTH

DIRECTED BY
NEETA THADANI

AND SPECIAL THANKS TO



Kentucky
Foundation for Women

PLAYBILL®

WWW.PLAYBILL.COM

AND SPECIAL THANKS TO
SUE FOSSON

THE CAST

EMMA BORDEN REILLY RICHARDSON
LIZZIE BORDEN MCKINLEY HARPER
BRIDGET SULLIVAN ELIZA MULLINS
ANDREW BORDEN PATRICK LEE LUCAS
ABBY BORDEN LAURA MANCUSO
HOSEA KNOWLTON + OTHERS ZACKERY MORRIS
ALICE RUSSELL + OTHERS HANNAH BROWNING

IN LOVING MEMORY OF



**ANDREW
BORDEN**

1822-1892



**ABBY
BORDEN**

1828-1892

THE CAST



REILLY
RICHARDSON



MCKINLEY
HARPER



PATRICK
LEE LUCAS



LAURA
MANCUSO



ELIZA
MULLINS



ZACKERY
MORRIS



HANNAH
BROWNING

SHOP NOW

for all your Broadway merchandise
and Playbill souvenirs

PLAYBILLSTORE.com

PLAYBILL.COM/VAULT

THE TEAM

BOOK CAVAN HENDRON & AARON ROITMAN

LYRICS CAVAN HENDRON & MATTHEW NASSIDA

MUSIC MATTHEW NASSIDA

DRAMATURG / CONSULTANT CARA ROBERTSON

DIRECTOR NEETA THADANI

PRODUCER AUDREY BELLE ADAMS



EXECUTIVE ARTISTIC DIRECTOR VANESSA BECKER WEIG

ASSOCIATE FESTIVAL PRODUCER RYLIE SUDDUTH

STAGE MANAGER BELLA MANCUSO RICHIE

SOUND ENGINEER DAVID SIMMONS

designed by
merch.

Merch. is a theatre-inspired fashion and lifestyle brand founded during the 2020 Broadway shutdown, **dedicated to capturing the spirit of live performance through innovative, fashion-forward designs.** With a focus on sustainability, inclusive sizing, and their in-house label "Theatre Club," they celebrate theater lovers of all ages while pushing show merch into the future.

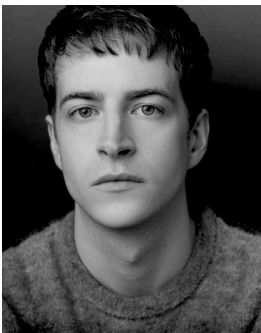
www.merchdot.com



THE TEAM



CAVAN
HENDRON



AARON
ROITMAN



MATTHEW
NASSIDA



NEETA
THADANI



CARA
ROBERTSON



AUDREY
BELLE ADAMS

On stage or off...
Find your next gig through
PLAYBILL JOBS

Visit [Playbill.com/Jobs](https://www.playbill.com/jobs) to apply for everything
from internships to administrative positions.

[PLAYBILL.COM/VAULT](https://www.playbill.com/vault)

MARY TODD LINCOLN

HOUSE

Discover one of America's most fascinating first ladies!

The Mary Todd Lincoln House was the family home of the wife of 16th president, Abraham Lincoln. Mary Lincoln was sophisticated, educated, and versed in politics. On the surface, her success in the White House seemed assured. Yet, few women in American history have endured as much controversy and tragedy.

859-233-9999

WWW.MTLHOUSE.ORG



578 WEST MAIN ST. LEXINGTON, KY 40507

THE HISTORY

On August 4, 1892, Andrew and Abby Borden were found brutally murdered inside their home at 92 Second Street in Fall River, Massachusetts. Andrew, a wealthy and well-known businessman, was discovered on the sitting room sofa, his face struck repeatedly with a hatchet. Upstairs, Abby lay in the guest bedroom, killed earlier that morning in a similarly violent attack.

Suspicion quickly fell on Andrew's daughter, Lizzie Borden, who was home at the time. Her testimony raised questions. A dress she later burned drew attention. And beneath it all was a strained and complicated relationship within the household, particularly between Lizzie and her stepmother.

Lizzie was arrested and brought to trial in June 1893. The case captivated the nation. Crowds gathered. Newspapers sensationalized every detail. Yet despite the frenzy, the evidence remained circumstantial. There were no eyewitnesses, no weapon conclusively tied to Lizzie, and no blood found on her person.

After just over an hour of deliberation, the jury found her not guilty.

Lizzie and her sister Emma later moved to a new home they named Maplecroft, seeking distance from the house on Second Street. But the shadow of the murders followed them. Over time, the sisters grew apart and ultimately separated.

The killings of Andrew and Abby Borden were never solved.

More than a century later, the case endures as one of America's most enduring mysteries, suspended somewhere between fact and folklore. And the question remains: was Lizzie Borden a murderer, or something far more complicated?



SEEDS & SAPLINGS

FOR KIDS AS THEY GROW & GIFTS FOR THE SEASONS

INSPIRE CREATIVITY & A LOVE FOR THE ARTS IN THOSE AROUND YOU!



VISIT US AT OUR NEW LOCATION:

228 EAST MAIN STREET, GEORGETOWN, KY 40324

AND ON OUR NEW WEBSITE:

WWW.SEEDSANDSAPS.COM

RO & co.

PROUDLY SERVING CENTRAL
AND EASTERN KENTUCKY FOR
8 YEARS AND COUNTING

BROOKE OTIS-MULLINS

REAL ESTATE AGENT & CO-FOUNDER OF RO&CO

(859)432-0820

BROOKE@ROANDCOREALTY.COM

153 MOORE DR.
LEXINGTON, KY 40503



OLIVIA ELISE

events

WEDDING PLANNING & COORDINATION

OLIVIAELISEEVENTS.COM



US GHOST
ADVENTURES



THE HISTORIC
LIZZIE BORDEN
HOUSE

WWW.USGHOSTADVENTURES.COM

ESCAPE

To Your Dream Place

101 VACATIONS
TRAVEL AGENCY

FAMILY, LUXURY, AND GROUP TRAVEL PLANNING

From crafting unforgettable family vacations to orchestrating romantic getaways and destination weddings, I'll help you plan an experience that aligns with your lifestyle and priorities. Let me navigate the complexities of travel planning for you, freeing up your time to focus on the special moments that mattermost. With expertise and attention to detail, I'll transform your travel aspirations into seamless, stress-free realities.



Jessica Siegel

Luxury Travel Advisor | 502-417-3207

Jessicas@101-vacations.com



All-Inclusive Mexico



Croatia's Adriatic Sea



Germany River Cruise

Kentucky, Illinois, and beyond.

Benjamin Marshall

MEDIA

Photo. Video. Graphics. Social. Websites.

benjaminmarshallmedia@gmail.com | benjaminmarshallmedia.com

(606) 560-0147

HARPERPHOTOGRAPHYKY@GMAIL.COM
HARPERPHOTOGRAPHYKY.SHOOTPROOF.COM

SOCIAL MEDIA:
@HARPER_PHOTOGRAPHY_KY

A black and white photograph of a curved, rectangular gravestone. The name "ELIZABETH" is carved in large, block letters across the top. The stone is set in a grassy area with some weeds.

ELIZABETH

A black and white photograph of a curved, rectangular gravestone. The name "EMMA" is carved in large, block letters across the top. The stone is set in a grassy area.

EMMA

FOREVER
AND
ALWAYS

@BORDENMUSICAL

BORDENMUSICAL.COM